

ELMARK[®]

The Brand of Electricity

JIG SAW

Model 59520



Instruction manual

- These instructions apply to this appliance. The instructions contain important information regarding the use of this appliance.
- Before using this appliance it is important to read whole instruction manual, especially safety instructions. Failure to follow these instructions may lead to serious injuries or may damage the appliance.
- These instructions are based on standards and regulations, that apply for the European Union.
- When using this appliance abroad, you must comply with that country's regulations.
- Save these instructions for future reference. If you hand this appliance to third persons, you must also provide them with this manual.

Warning explanation

You will find these warning signs inside these instructions or on the appliance:



WARNING!

This warning symbol/word signifies risk that, if it is not avoided, can lead to material damage, death or serious injuries.



NOTE!

This symbol gives useful information about appliance usage.



WARNING!

The manufacturer is not responsible for the damage, caused by incorrect use, maintenance or changing of this appliance, with the purpose of changing parts or modification. Only an authorized service agent can make modifications into this appliance.



WARNING!

Failure to comply with instructions and warnings written in this manual, can lead to electric shock, fire and/or serious injuries.

When using this appliance, where metal parts of the appliance can come into contact with hidden electrical guides or its own electric cable (if it is installed), always hold the appliance by its plastic, insulation handle.

MAIN COMPONENTS OF THE TOOL AND SWITCHES

- | | |
|---|--|
| A. On/off switch | G. Angle adjustment slider |
| B. Locking button | H. Button to activate the blowing function |
| C. Speed selector | I. Locking lever |
| D. Blade holder | J. Sliding plate |
| E. Blade guard | K. Suction attachment |
| F. Button to adjust the pendulum function | |





WARNING!

Do not overload the tool. Overload and repeated engine blockages can damage the tool. It will lead to reduced lifetime of the tool.



WARNING!

Tool is not intended for operating in potentially explosive environment!

GENERAL SAFETY INSTRUCTIONS



WARNING!

Read all safety warnings and instructions described in this manual.

Failure to comply with safety instructions can lead to risk of exposure of human and animals to the electric shock, fire and serious consequences.

Keep all safety instructions and warnings (including those on the tool) for the future use.

The term 'electric tool' used in the safety instructions refers both to the electric tools powered from the electric network (with an electric cable) as well as the electric tools powered from rechargeable batteries (without an electric cable).

WORK AREA SAFETY

- a) **Keep the work area clean and well lit.** Cluttered and unlit work areas and work benches invite injuries.
- b) **Do not use tool in presence of explosive substances such as flammable liquids or gases.** Sparks generated during the operation of tool may cause ignition of evaporation or powder.
- c) **Keep children and visitors away.** Any distraction may lead to the losing control.

ELECTRICAL SAFETY

- a) **Tool plug needs to correspond to power network jack (if the tool has power cable). Never, in any circumstances and for any reason, adapt or process the plugs. Do not use any adapters with grounded appliances.** Standardized and original plugs and jacks reduce danger of electric shock.
- b) **Avoid contact with grounded surfaces such as pipes, radiators, stoves or fridges.** In case your body is grounded danger of electric shock is strongly increased.
- c) **Do not expose charger to rain or snow.** If water enters into the tool it will strongly increase danger of electric shock.

- d) **Treat power cable with precaution. Make sure cord is located so that it will not be stepped on, tripped over, or otherwise subjected to damage or stress. Never use cord for carrying, pulling or drawing the toll. Never expose the cord to the heat, oil, sharp edges or moving objects.** Damaged or knotted cord increase possibility for electric shock.
- e) **When operating outside, use adequate extension supplies intended for outside use.** Using adequate extension supplies will reduce danger of electric shock.
- f) **If operating in wet environment is necessary, use only power network that is secured with differential voltage switches – FID (RCD).** Use of FID switches reduces danger of electric shock.

PERSONAL SAFETY

- a) **When operating the tool you need to be very careful. Be aware of what you are doing and do it reasonably. Do not operate the tool if you are tired or under the influence of drugs, alcohol or medicines.** One moment of reduced attention when operating the tool can lead to serious physical injuries.
- b) **Always wear protection equipment. Always wear safety glasses, safety gloves and hearing protection.** Using protection equipment adjusted to the work environment and conditions, such as dust mask, stable shoes, helmet and hearing protection, reduces danger of physical injuries.
- c) **Prevent tool from starting automatically.** Before connecting the tool to the power network or before lifting or carrying the tool, always check and make sure that switch is OFF. Do not carry or transport the tool holding your finger on the switch or connect it to power network while the tool is turned ON. Failure to comply with these instructions can result in accident.
- d) **Before plugging and starting the tool, remove all accessories and keys.** Key that is left on the rotating part of the tool may cause physical injury.
- e) **Do not overreach.** Keep proper footing and balance at all times. Do not use on a ladder or unstable support. This will allow you to have good tool control in case of unexpected or unpredicted situations.
- f) **Wear proper apparel.** Do not wear loose clothing or jewelry that can get caught in tool's moving parts and cause personal injury. Wear protective hair covering to contain long hair and keep it from being drawn into nearby air vents.
- g) **If the tool is equipped with suction mechanism and dust collect mechanism, always make sure it is properly installed and plugged.** Use of dust collect mechanism can reduce the influence of exposure to emission and harmful dust substances.

OPERATION AND MAINTENANCE

- a) **Do not overload the tool.** Use proper tool / equipment for your work. If you use the tool properly and for intended purposes, it will perform with higher quality and higher level of safety.
- b) **Do not operate the tool if turn on / turn off switch is out of function.** Any tool that cannot be used with on / off switch is dangerous and needs to be repaired immediately.
- c) **Before any use of the tool, including adjusting, maintenance, supplies replacement or storing, draw the plug off the electric network. These preventive safety measures reduce the danger that tool will automatically start.**
- d) **When you do not use the tool (including when you leave it without surveillance only for limited time) keep it out of reach of the children. Do not allow persons who are not well informed about instructions indicated in this manual use the tool.** If used by unskilled or not qualified individuals this tool is dangerous.
- e) **Maintenance of the tool. Check for possible incorrect adjustment, poor fixing of removable or flexible parts, possibility of breakage of parts and any other irregularities that can have negative impact on tool operating.** Many of the accidents result from poor maintenance of the tools.
- f) **Make sure cutting tools are clean.** Surveillance and use of the tool is easier and safer when all tool parts are clean and well maintained.
- g) **Tool and all removable parts and accessories are to be used in conformity with instructions contained in this Manual with the respect of operating conditions and type of work you want to perform.** Using tool for any other purposes than indicated in this manual can result in dangerous situations.

SERVICING

- a) Servicing should only be performed by an authorized service center. When servicing use only identical and original replacement parts.

SAFETY INSTRUCTIONS FOR JIGSAWS

GENERAL

- Always check that the network voltage is equal to the voltage indicated on the nameplate (the tool with a nominal voltage of 230 V or 240 V can also be connected to the 220 V voltage).
- Check the proper functioning of the tool before each use; in the event of a malfunction, the tool should be immediately repaired by a specialist at an authorised workshop; never open the tool yourself.
- **Do not work with asbestos-containing material** (asbestos causes cancer)
- The tools should not be used by persons under the age of 16 years.
- During work, the noise level may exceed 85 dB(A); use noise protection.
- Wear safety goggles when working with materials generating chips.
- Powders of materials such as lead-containing paints, certain types of wood, minerals or metals may be harmful (during contact or inhalation, dust may cause an allergic reaction and/or respiratory disease of the worker or bystanders); **wear a dust mask and use a dust extraction device where it can be connected.**
- Some types of dust are classified as carcinogenic (such as oak and beech dust), especially when used with wood processing additives; **wear a dust mask and use a dust extraction device where it can be connected.**
- Follow the national dust requirements for the materials you want to process.
- Use fully stretched and safe electrical extensions with a capacity of 16 amps.
- **Always unplug the power plug from the socket before making any adjustment or changing accessories.**

BEFORE USE

- Before sawing, remove obstacles above and below the cutting line.
- Avoid injuries by screws, nails or other elements in the workpiece; remove them before starting work.
- **Secure the workpiece and attach it with clamps or other equipment** (if you hold the workpiece with your hands or against your body, it will be unstable and you may lose control of the tool)

DURING USE

- **You must only hold the power tool on an insulated handle if you work in an area where the inserted tool can come into contact with hidden network connections or your own network cable** (contact with the installation, which causes under voltage the metal parts to be powered, leading to electric shock).
- **While the attached tool is not in use, the handle can warm up; this is a normal phenomenon and is not a cause of malfunction.**
- Always keep the cable away from the moving parts of the machine; point it towards the rear, away from the machine.
- If the connecting cable is damaged or torn during operation, do not touch it, but immediately pull the electric plug from the socket.
- Never use tools if the cable is damaged; the fault should be fixed by an expert.
- If electrical or mechanical faults occur, immediately turn off the machine and remove the plug from the socket.
- Make sure that hands are clear of the saw blade when the tool is activated.

ACCESSORIES

- Use only original attachments.
- Do not use damaged, deformed or blunt saw blades.

EXTERNAL USE

- When using outdoors, connect the tool to a special FID current protection with the maximum current sensitivity of 30 mA and use an extension cable that is moisture-proof.

AFTER USE

- When you place the tool sideways, turn off the engine and make sure that all the moving parts of the tool are completely halted.

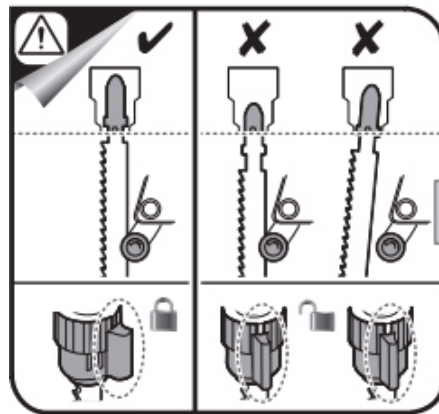
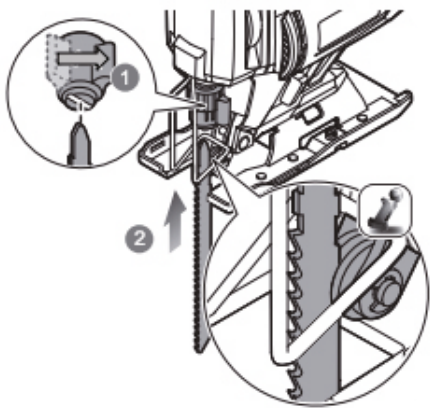
INSTALLING/REPLACING BLADES



CAUTION!

Before installing or changing attachments, the tool should be disconnected from the mains socket.

1. Remove the blade guard (E) from the device's housing.
2. Unscrew and hold the blade guard (D) by turning it in the counter-clockwise direction.
3. Insert the blade into the blade holder so that it fits nicely into the holder:
NOTE: Make sure that the blade is oriented correctly (away from the tool).
4. Tighten the blade holder in the clockwise direction to secure the saw blade to the site.
5. Check that the blade is installed in the blade holder firmly and securely.



SPEED SELECTOR

Use the speed selector (C) to select the appropriate speed for working with various materials.

For faster operation, turn the speed selector toward a higher number; for slower operation, turn it toward a lower number. Adjust the rate of vibration to material and work.



PENDULUM FUNCTION

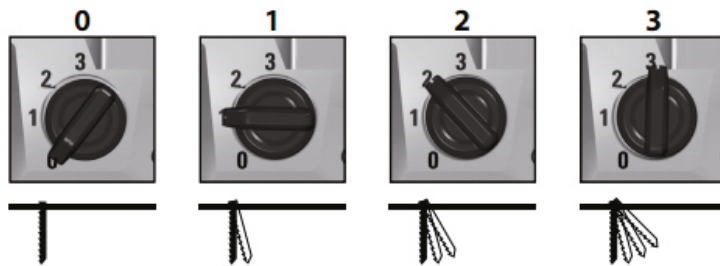


CAUTION!

Before changing the tool settings, the tool should be disconnected from the mains socket.

In addition to the oscillation speed, you can also adjust the pendulum function. Pendulum function is a special function where the blade moves slightly forward in the cutting oscillation, while when pulled into the device it moves backwards. Cutting chips fly away easier, so the sawing speed increases slightly.

To adjust the pendulum function, turn the adjusting knob (F) to the desired setting. At level 0, the tool will cut straight. At levels 1 to 3, the swinging will gradually increase.

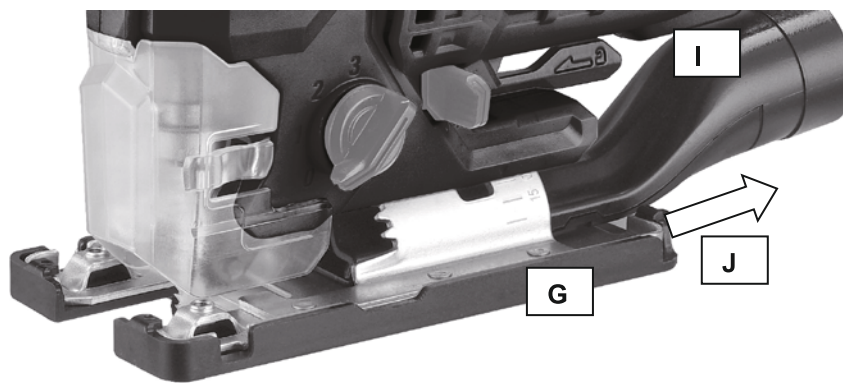


SETTING THE CUTTING ANGLE

CAUTION!

Before changing the tool settings, the tool should be disconnected from the mains socket.

1. Unbuckle the locking lever (I).
2. Drag the sliding plate (J) back, so that it pops up.
3. Set the desired cutting angle (G).
4. Push the sliding lever forward to re-lock it.
5. Buckle the locking lever.

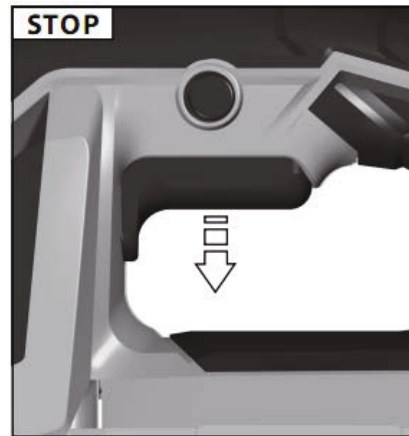
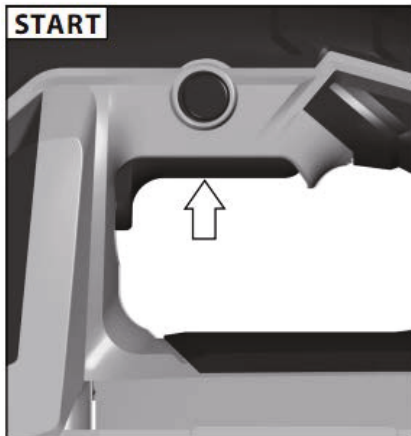


6.

7.

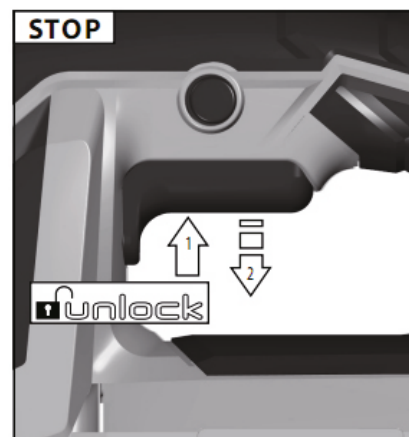
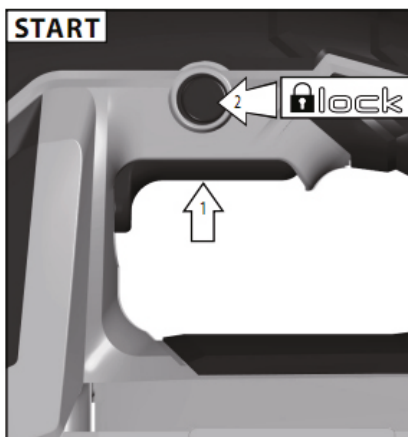
SWITCH OPERATION

Power the tool on by pressing and holding the **on/off switch (A)**.
Release the **on/off switch** to turn the tool off.



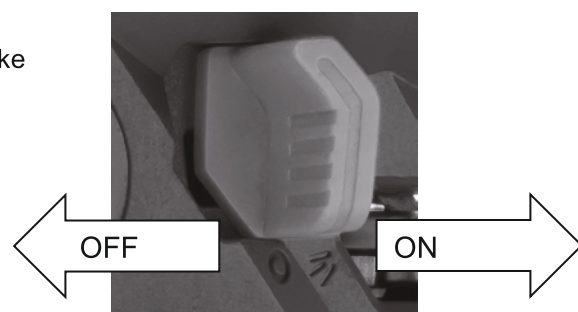
Locking button

To keep the tool running continuously, press the on/off switch (**A**) and hold it. Then press the locking button (**B**), and the tool will work continuously.
To turn off the tool, press the on/off button and release it.



BLOWING FUNCTION AND THE SUCTION ATTACHMENT

During cutting, pieces and dust can accumulate on the workpiece, which can hide the drawing and make it difficult to work. Therefore, it is recommended to use the blowing function.



Blowing function

1. Remove the blade guard (**E**) from the device's housing.
2. Move the button to turn the blowing function on (**H**) backwards.
3. To turn off the blowing function, move the button forward.

Suction attachment

In addition to blowing, the device also has the option to install a suction device via a suction attachment.

1. The blade guard (**E**) should be installed on the tool.
2. Fit the suction nozzle (**K**) to the rear of the tool.
3. Move the button to turn on the blowing function (**H**) forward to turn off the function.
4. Turn on your suction device.

MAINTENANCE AND CLEANING

Before operating the tool always draw the plug out of the jack.

Use wet cloth to clean plastic parts of the drill. Do not use any corrosive substances or sharp objects. Air vents placed on the engine box need to be pervious and clean. Use soft cloth or brush to clean these.

MAINTENANCE

Only use original supplies, accessories and spare parts of the manufacturer. If the tool does not perform well despite regular maintenance and quality control, it has to be repaired by authorized service agent.


Before handing the device over to the service agent, make sure it's cleaned and in its original packaging.

Never soak tool or any of its parts in the liquid.

NOTES

This tool is not to be used by individuals (including children) with reduced physical, cognitive and mental abilities or persons without required knowledge and experience, unless they are supervised during the operation or instructed for tool operation and purpose by a person responsible for their safety.

TECHNICAL DATA

NAME	UNIT OF MEASUREMENT	TYPE 59520
Voltage	V (a.c.)	~230V 50/60Hz
Power	W	710
Current	A	6
Revolution per minute number (n ₀)	min ⁻¹	1500-3100 (no load)
Cutting depth: - wood - iron - plastic	mm	105 10 20
Mass	kg	2,30
Level of sound pressure L _{p(A)}	dB(A)	88,1 ; K=3 dB(A)
Level of sound power L _{w(A)}	dB(A)	99,1 ; K=3 dB(A)
Level of vibration	m/s ²	8,162 (wood) 8,751 (iron) K=1,5
Cutting area	°	0-45
Protection class		Double insulation



EL[®]MARK

www.elmarkholding.eu

ELMARK FACTORY IN EUROPE

ELMARK INDUSTRIES SC
BULGARIA, DOBRICH
2 Dobrudja Blvd.
Tel: +359 58 500 059 +359 58 500 050
Fax: +359 58 500 060
E-mail: elmarkfactory@elmarkholding.eu

GENERAL REPRESENTATIVE FOR BULGARIA

ElektroMarket LTD
GRUP
BULGARIA, VARNA
ZPZ, 10 Perla Str.
Tel.: +359 52 57 55 57
Fax: +359 52 57 55 80
E-mail: officevarna@elmarkgroup.eu